

CU

Ride yourself out for fun



SUPER
SOCO

Eyes of Wisdom

Intelligent sensing head light

Symmetrical U Design, integrated daylight and indicators.
Hidden LED head light (high beam and low beam included).

With hot runner system work instruction, get perfect dustproof and waterproof performance.

Matrix LED beads, carve the shape of light, flash the charm of wisdom.

75_m

Radiation distance

29000_{cd}

High beam brightness

13480_{cd}

Low beam brightness



Wings of Flying

Inline wing type tail-lights

Inline high brightness LED lamps.

All-in-one light (position light, turning indicators and braking light)

integrated into one light with a sense of sharp.

Inimitable symbol of identification.





Free on stretch Comfortable riding posture

Easy for foot touching the ground.
Riders above 180cm, can stretch freely.

VA (Vertical Alignment) Intelligent high brightness display

VA (Vertical Alignment) multiple function display, self-adjust with light sensing.
150° wide-angle visible clearly.
Self-inspection on initiation, safe riding.



Speed



Battery
capacity



Intelligent
light sense



Cruise



Parking
indication



Error
report





Small size, big power

Exclusive CU customized lithium battery pack

Elegant and Practical (SOC indicated). Weight 10.5kg (light and portable)
Max. range 85km.

5^{years+}
Life time

800⁺
Cycle times

~8^h
Charging time

170^{PCS}
18650 cells

Digital contact switch

Comfortable touching.
Multifunctional buttons.
Higher stability.



Multifunctional under seat space

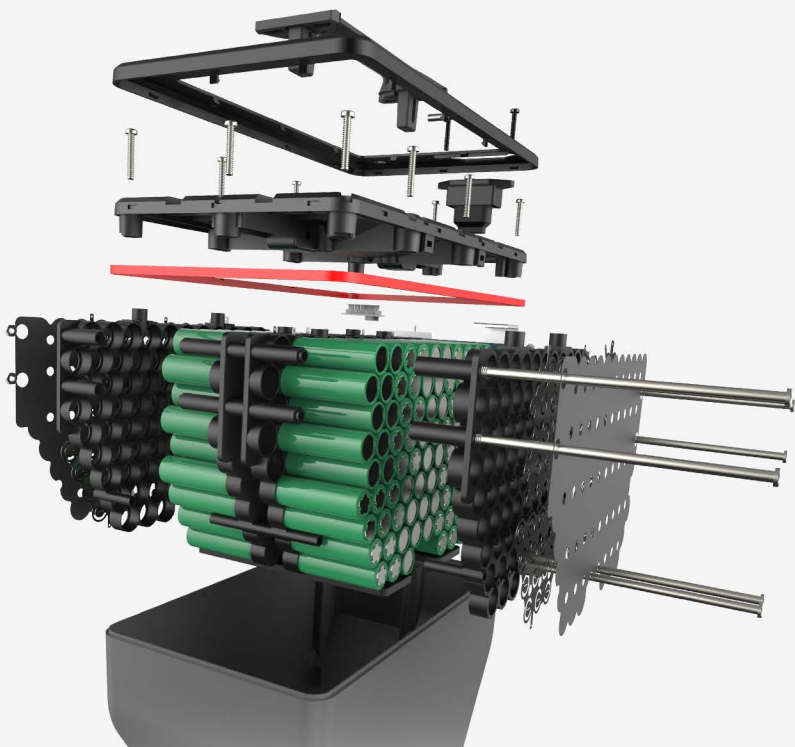
User friendly design.
Smart isolated space for battery and storage.
Exclusive buckle for charger connector,
prevent damage on power cable.



Bigger capacity, higher security

New generation pack solution

Honeycomb structure design with performance of geometric mechanics.
Cell distance is safe and proper.
New thermal technology, better cell performance.



Excellent performance

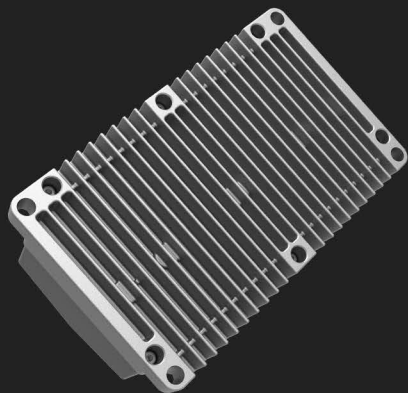
High efficiency kinetic motor

Customized developing for City transportation.
Stronger magnetic steel with unique wiring way.
Carry FOC vector controller 3.0.
Improve the energy efficiency and range.

More sensitive control

FOC vector controller 3.0

Precise control.
New torque loop,
linear output of power,
higher efficiency.



Better control, more safer

Frame made by carbon structural steel

Higher intensity and lighter weight,
Less vibration, more comfortable.
Passed 500,000 times vibration test,
amazing durability.



Excellent safety and flexibility

Front/rear disc brake+EBS assistant system

Quick response, shorter braking distance.
Re-cooperation, extend range.

1.8m

Dry braking distance

2.1m

Wet braking distance

*These data tested by rider with weight 70kg, at 20km/h. Braking distance could be different with different rider at different road conditions.



Precise positioning, stable communication ECU, Generation 3, Intelligent brain

Self-developed BMOS V3.0 intelligent communication system

Bikers and Bikes connected on Clouds

Stable data transmission | OTA function — remote upgrade | Quick GPS positioning



Data collection



Data processing



Customer feedback

Detail functions available subject to countries.

High energy efficiency

Intelligent BMS (battery management system), precise SOC.

Multi-protections for battery.

SOCO APP synchronizes the battery info automatically.

Planning your trip reasonable.



Over-discharge protection



Over-charge protection



Over-current protection



Short-circuit protection



Temperature protection



Battery equalization



Intelligent life

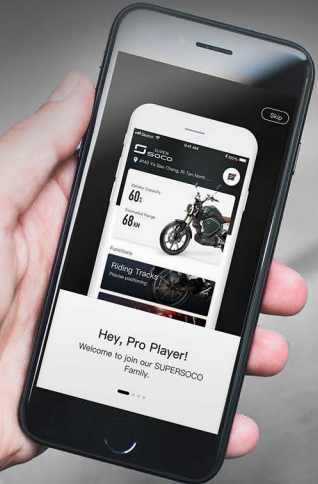
Intelligent vehicle inspection,

Real-time location, drive tracking

Synchronizes the battery info. automatically

Intelligent riding play in your own way

*Supersoco App is available subject to countries.



Parameters

Homologation		L1e-B (Regulation 168/2013)
Battery	Concept	Lithium battery (cell 18650)
	Capacity	60V30AH
Charger	Input voltage	100V-240VAC
	Output current	4A
	Charging time	≈8h
	Fast charger	Optional
Motor	Rated power	1300W
	Max power	2788W
	Max torque	115 N.m
Performance	Max speed	45km/h
	Max range	85km
	Climbing ability	15°

Basic Info	Weight	76 kg (include battery)
	L*W*H	1782mm*318mm*1087mm
	Wheelbase	1217mm
	Ground clearance	140mm
	Seat height	720mm
	Tyre	Fr.& Rr. 90/90-12
	Brake	Fr. Disc (ø 180mm) / Rr. Disc (ø 180mm)
	Rim	Fr. Alum. / Rr. Steel
	Shock Absorber	Fr.& Rr Hydraulic
	Swingarm	Alum.
	Side stand	Alum.
	USB	Available
Keyless Go	Available	



○ Moonlight White

● Starlight Silver

● Space Gray

● Ferrari Red

S
SUPER
SOCO
SUPER SOCO

www.supersoco.com
www.vmoto.com

Info@supersoco.com
susan@vmoto.com.cn

Homologation Certificate EEC 